



REGIONE AUTÒNOMA DE SARDIGNA
REGIONE AUTONOMA DELLA SARDEGNA

Allegato 6 alla Delib.G.R. n. 5/48 del 29.1.2025

**PIANO REGIONALE DI PREVISIONE, PREVENZIONE E
LOTTA ATTIVA CONTRO GLI INCENDI BOSCHIVI 2023-2025**

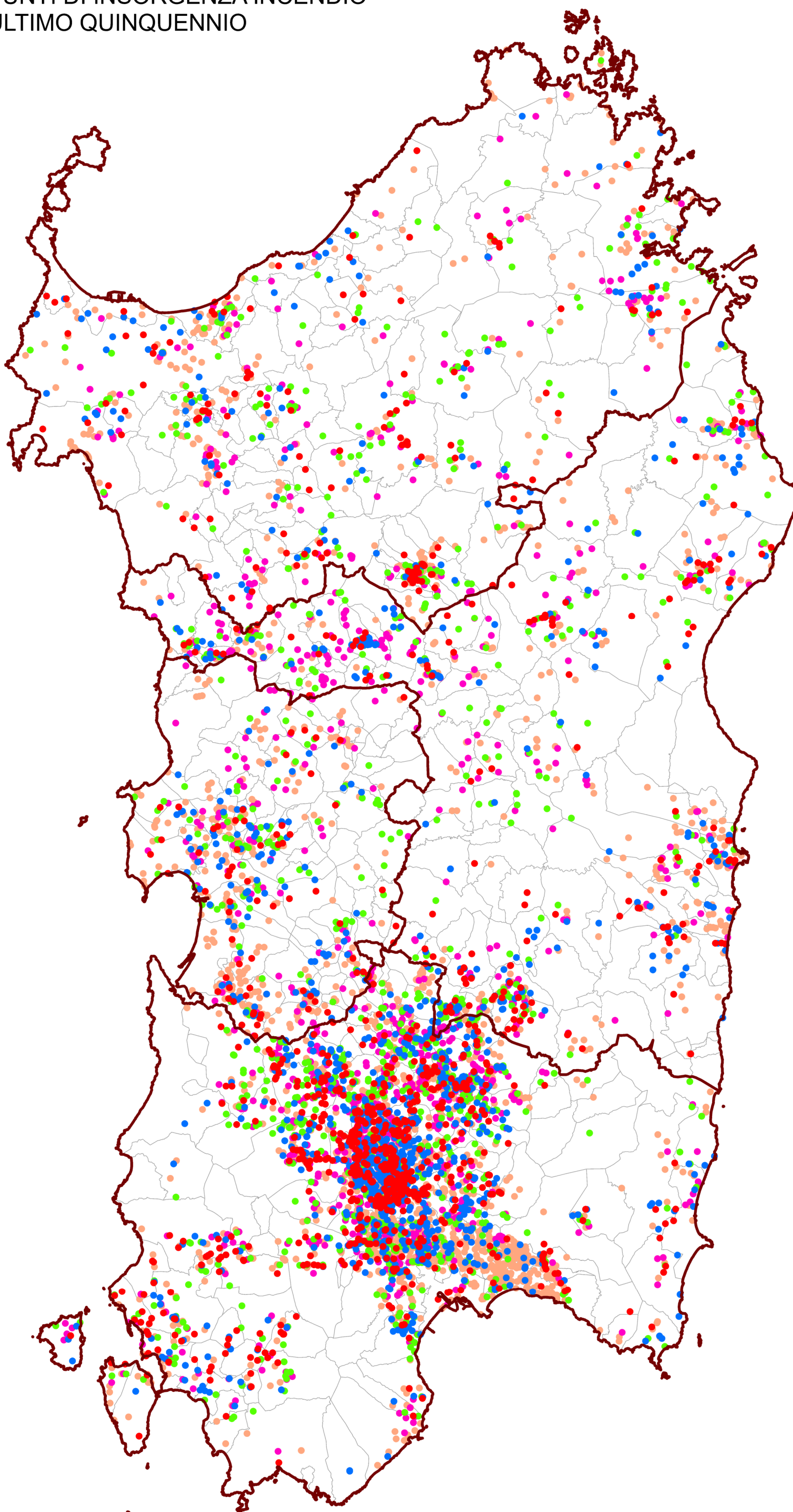
Aggiornamento 2025

SUPERFICI PERCORSE DAL FUOCO E INSORGENZE NELL'ULTIMO QUINQUENNIO

PUNTI DI INSORGENZA INCENDIO ULTIMO QUINQUENNIO



REGIONE AUTÒNOMA DE SARDIGNA
REGIONE AUTONOMA DELLA SARDEGNA



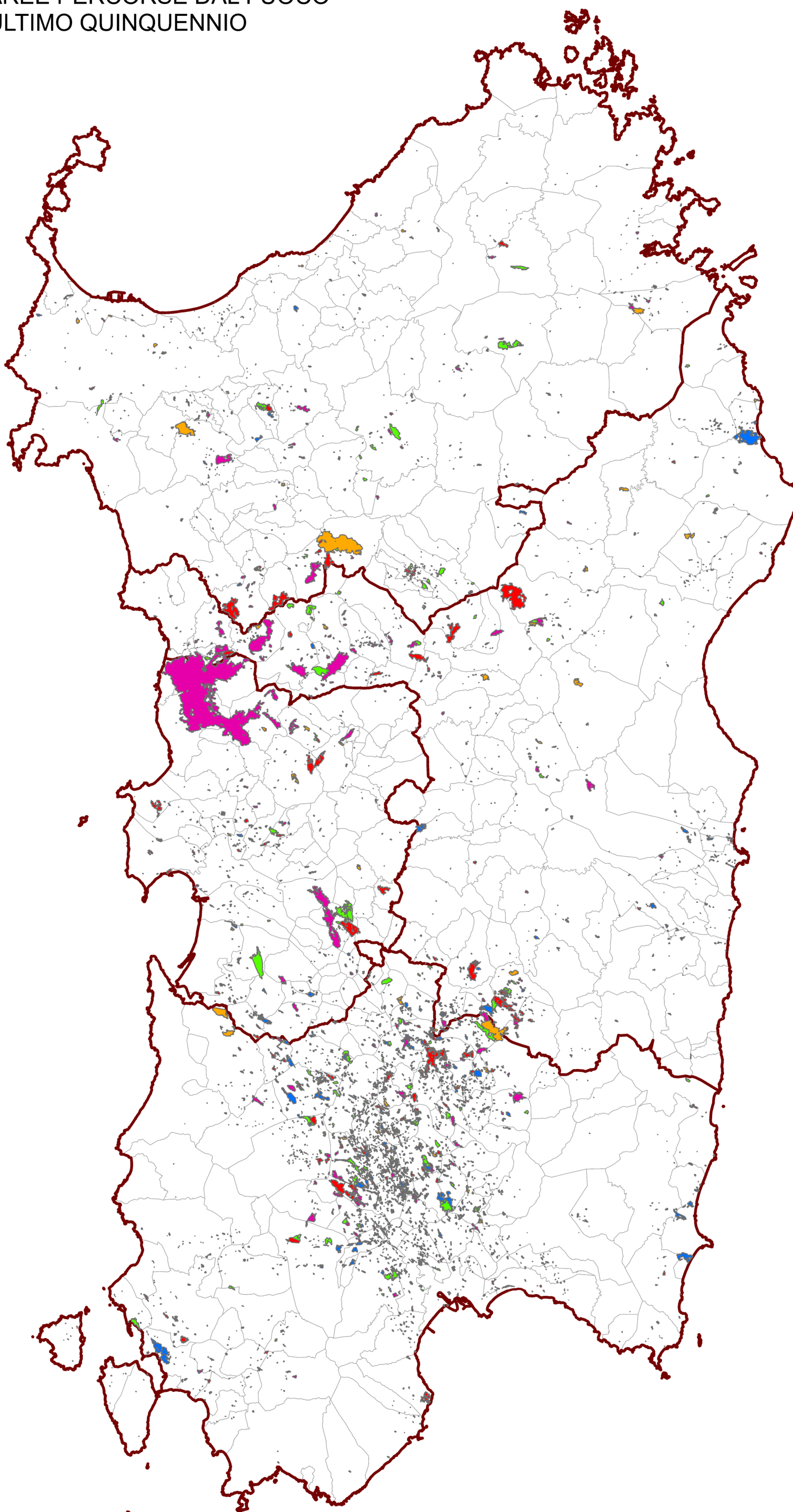
- Insorgenze Anno 2024
- Insorgenze Anno 2023
- Insorgenze Anno 2022
- Insorgenze Anno 2021
- Insorgenze Anno 2020
- Comuni
- ▭ Prefetture

Scale: 1:700.000

AREE PERCORSE DAL FUOCO ULTIMO QUINQUENNIO



REGIONE AUTÒNOMA DE SARDIGNA
REGIONE AUTONOMA DELLA SARDEGNA



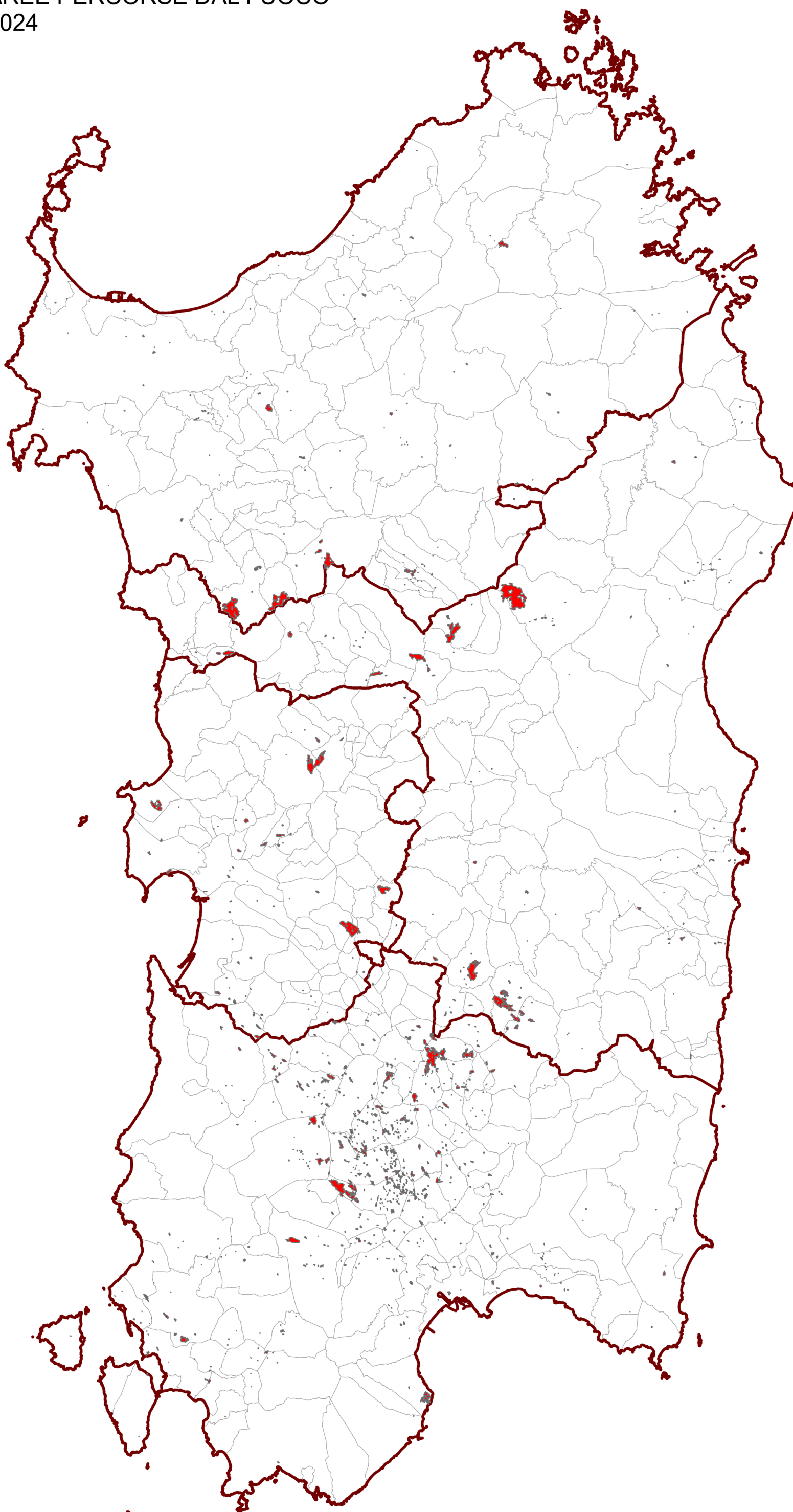
- Aree incendiate 2024
- Aree incendiate 2023
- Aree incendiate 2022
- Aree incendiate 2021
- Aree incendiate 2020
- Prefetture
- Comuni




Scale: 1:700.000

AREE PERCORSE DAL FUOCO 2024



REGIONE AUTÒNOMA DE SARDIGNA
REGIONE AUTONOMA DELLA SARDEGNA



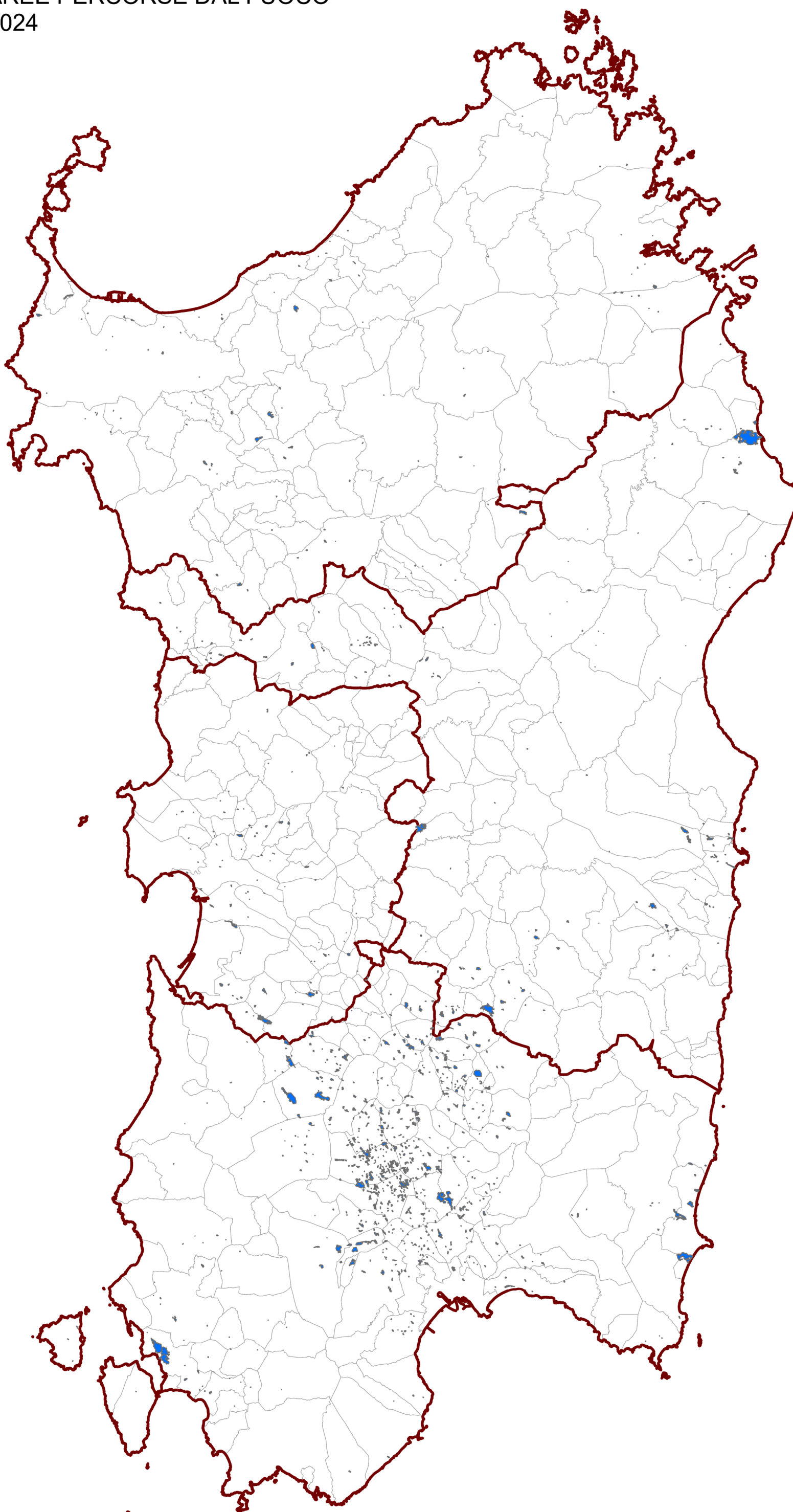
-  Aree incendiate 2024
-  Prefetture
-  Comuni




Scale: 1:700.000

AREE PERCORSE DAL FUOCO 2024



REGIONE AUTÒNOMA DE SARDIGNA
REGIONE AUTONOMA DELLA SARDEGNA



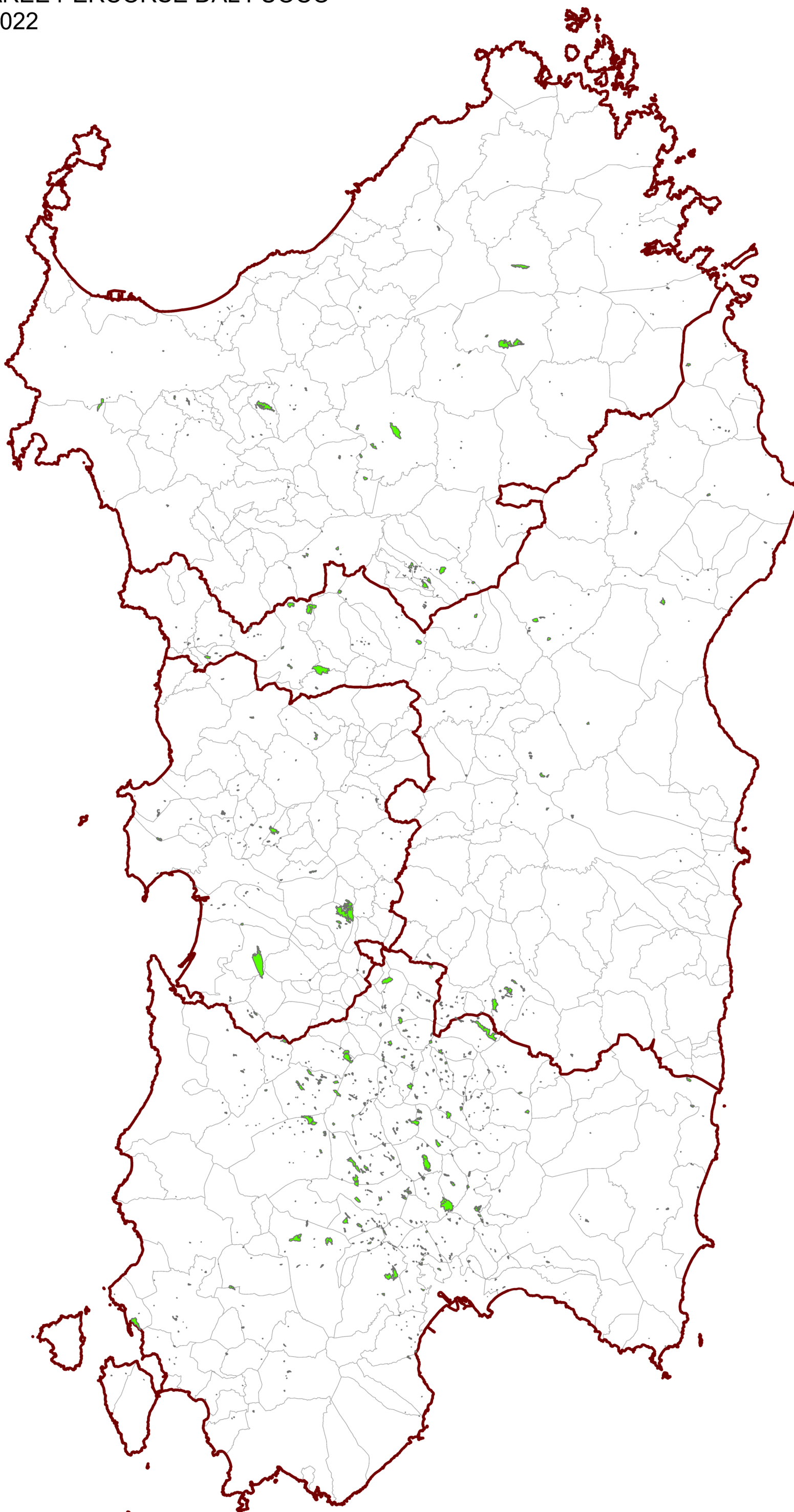
-  Aree incendiate 2023
-  Prefetture
-  Comuni




Scale: 1:700.000

AREE PERCORSE DAL FUOCO 2022



REGIONE AUTÒNOMA DE SARDIGNA
REGIONE AUTONOMA DELLA SARDEGNA



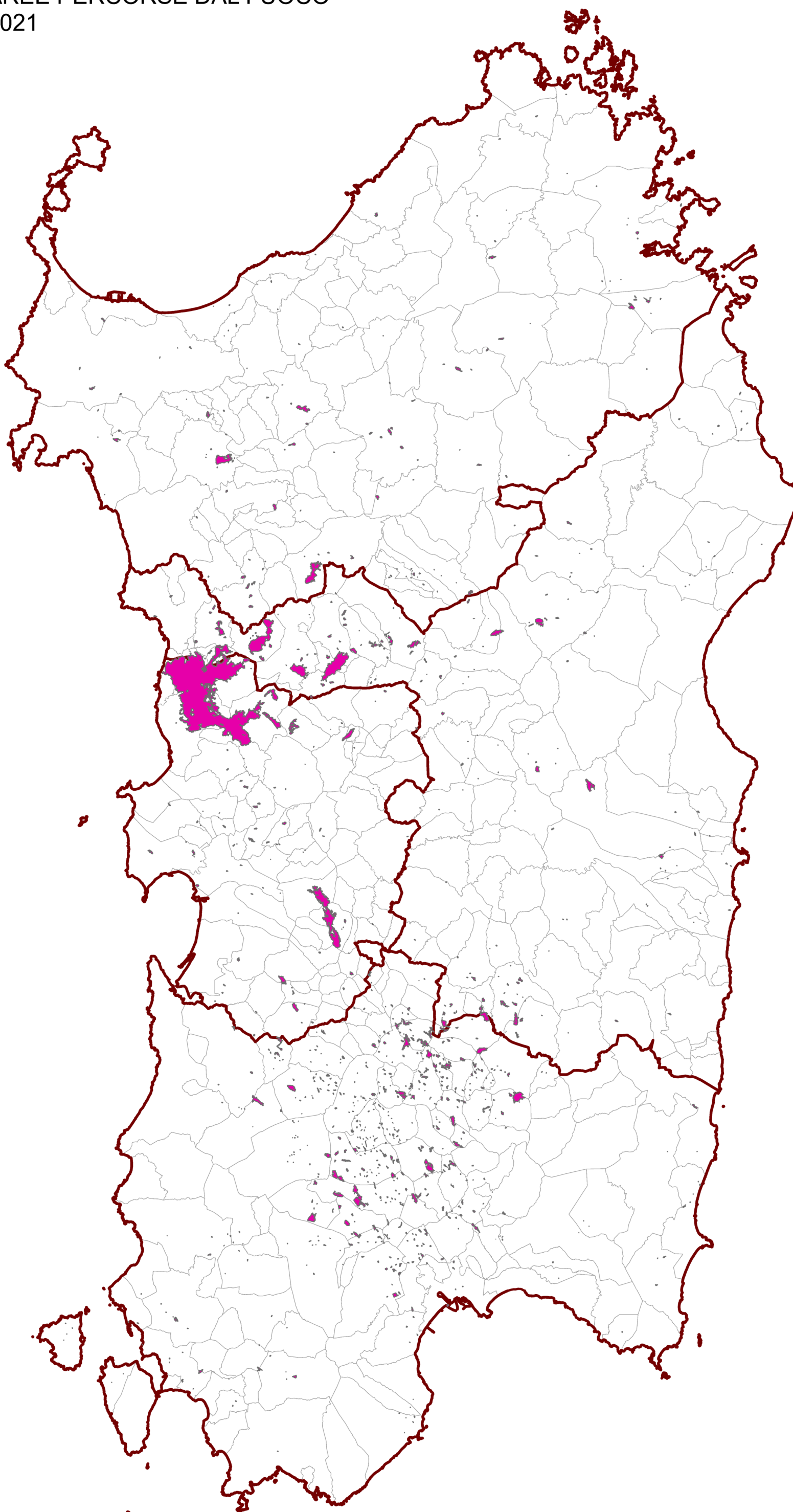
-  Aree incendiate 2022
-  Prefetture
-  Comuni




Scale: 1:700.000

AREE PERCORSE DAL FUOCO 2021



REGIONE AUTÒNOMA DE SARDIGNA
REGIONE AUTONOMA DELLA SARDEGNA



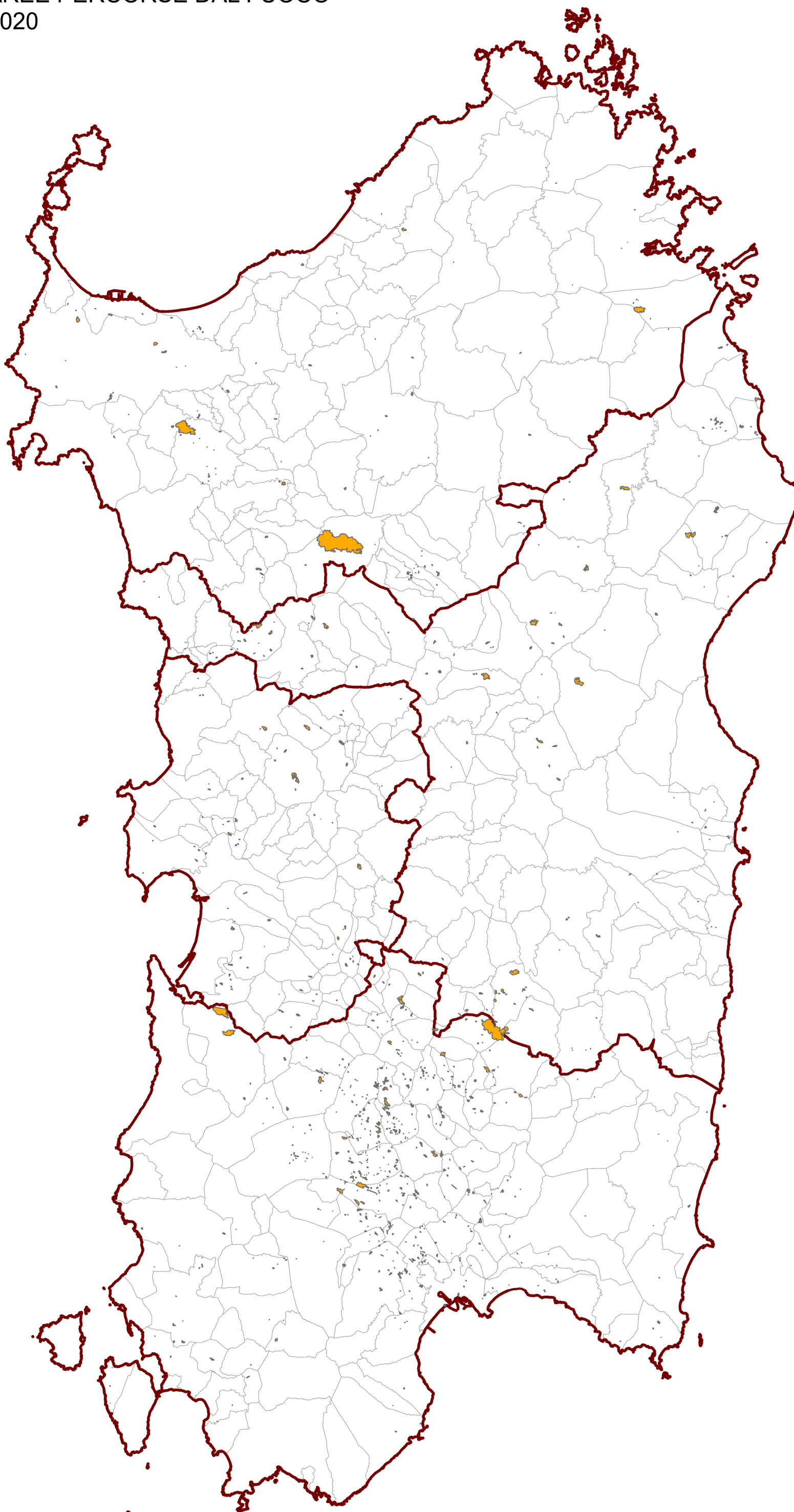
-  Aree incendiate 2021
-  Prefetture
-  Comuni




Scale: 1:700.000

AREE PERCORSE DAL FUOCO 2020



REGIONE AUTÒNOMA DE SARDIGNA
REGIONE AUTONOMA DELLA SARDEGNA



-  Aree incendiate 2020
-  Prefetture
-  Comuni

Scale: 1:700.000